



曾 泉 江 鐵 器 廠
CHAN CHUAN CHANG METAL WORKS

BLOCK 5055, ANG MO KIO INDUSTRIAL PARK 2, #01-1141,
SINGAPORE 569558 TEL : 64817736 FAX : 64813517
Email: sales@ccc.com.sg Website: http://www.ccc.com.sg
Reg. No. 204949/00M



JET NOZZLE



Brand : CCC

AIR DIFFUSION EQUIPMENT

JET NOZZLE

Series : CCC-PN

CHAN CHUAN CHANG METAL WORKS



VISION

“To produce high quality products, high standard of creativity in design and excellent credibility in reputation”

MISSION

“Serve customer with satisfactory and reliable works and products”

Chan Chuan Chang Metal Works was established in 1975, committed to the vision to manufacture good quality Air Diffusion Equipment. After building up its reputation in the industry as a top manufacturer, the company registered the logo with the Registry of Trade and Patents (Singapore). From then onwards, all equipment which has the trade mark symbolise our commitment to serve our customer with satisfactory and reliable works and products.


Our products have been tested by VIPAC, testing laboratory at Victorian technology Centre, Port Melbourne, Victoria. Furthermore, the results are NATA Certified (National Association of Testing Authorities, Australia) to ADC 10623 R3 (Air Diffusion Council, USA) and are officially endorsed in countries which are signatories to the I.L.A.C agreement-namely, Australia, New Zealand, Britain, USA and Malaysia.

We were proud to introduce the **Heavy Duty Aluminium Computer Floor Grille**, Series : CR to the industry in 1991. This has been a breakthrough as the grille are able to provide adequate air flow whilst maintaining the weight of any person or equipment. This is verified by the Comprehensive Loading Test performed by Singapore Institute of Standard & Industrial Research (SISIR), currently known as Spring Singapore. Series : CR has since then been installed in many computer rooms, wafer manufacturing plant and places which require the product.



COMPANY MILESTONE

1975 Established with the vision to manufacture high quality Air Diffusion Equipment to meet future needs and demands. Together with a team of experienced Engineers & Craftsman dedicated to Chan Chuan Chang's Motto – Commitment, Creativity & Credibility, we produced good quality products with high standard of creativity in design and maintained excellent credibility in reputation.

1982 Registered with the Registry of Trade and Patents (Singapore), CCC Trade Mark  has since become a household name in its industry.

1986 Chan Chuan Chang (CCC) products are tested by VIPAC, a testing laboratory at Victorian Technology Centre, Port Melbourne, Victoria. These results are NATA Certified (National Association of Testing Authorities, Australia) to ADC 10623 R3 (Air Diffusion Council, USA) and are officially endorsed in countries which are signatories to the I.L.A.C agreement – namely, Australia, New Zealand, Britain, USA and Malaysia.

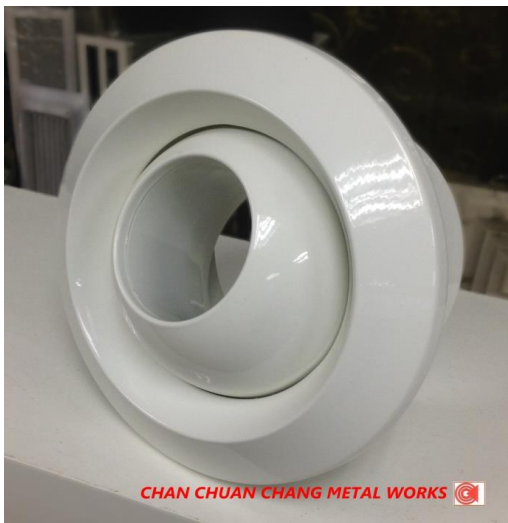
1991 CCC Aluminium Computer Floor Air Grille was sent for Comprehensive Loading Test conducted by Singapore Institute of Standard & Industrial Research (SISIR) and achieved excellent results.

1997 CCC was awarded ISO 9002 Certification. Our impressive list of satisfied clients is testimony to CCC's motto – Commitment, Creativity and Credibility.

2005 CCC has improved its quality management system with respect to the ISO 9001:2000 standard due to our commitment towards quality improvement in our products and customer satisfaction. We thank you for your faith and support in our products. We will continue to strive harder to exceed your demand & satisfaction.

2012 CCC was awarded ISO 9001:2008 Certification by BVQI Accreditation. CCC also became a certified member of Air Movement and Control Association International (AMCA). Our Low Leakage dampers were tested according to AMCA standards and received certifications.

JET NOZZLE



CCC-PN

Applications:

- CCC Jet Nozzle is used for area that requires long distance air throw with low noise ratings.
- Areas that has large and high ceilings, such as concert halls, theatres, museum, airports, shopping centres etc.

Features:

This series is designed for heating and cooling in large and high areas where high air projection ability are required to facilitate the air flow such as theatres, concert halls, museum, airport, shopping centres etc.

The aerodynamic design of the diffuser are able to provide a long throw even at high outlet velocities and reduced noise levels.

CCC Jet Nozzle is adjustable manually, rotating in any direction to facilitate your airflow.

This series can be wall or exposed duct mounted.

It is constructed in high quality aluminium material and white powder coating finishing.

*Designed for Large & High areas, giving a long throw
And reduced noise levels.*

JET NOZZLE



Elegant design to match your wall or exposed duct mounting.

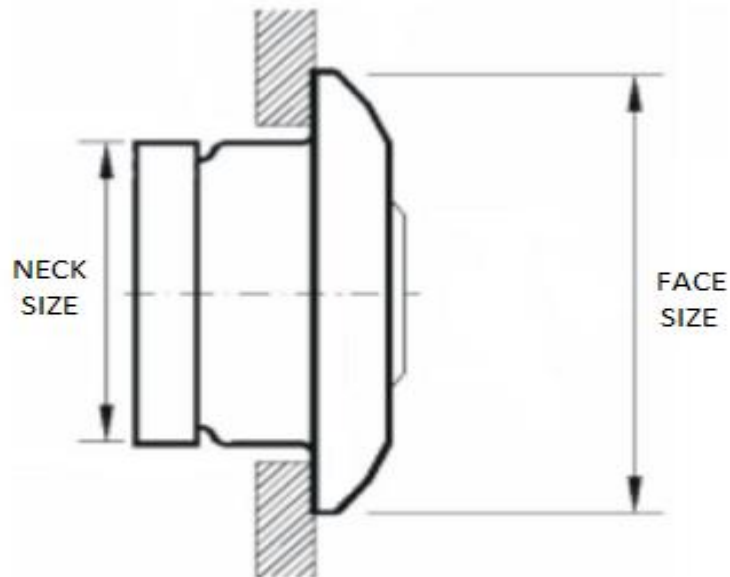
Adjustable centre ball to facilitate your direction of airflow.



Optional Accessories (chargeable) :

- Other colours available upon request.
- Fan-Type Damper
- Collar Adaptors
- Gasket Foams
- Rubber Seals

DRAWINGS & SIZES



TYPE	NECK SIZE (ø MM)	FACE SIZE (ø MM)	AIR VOLUME (m ³ /h)	THROW (m)
1	158	227	706	19.9
2	198	267	1108	24
3	248	317	1739	29.3
4	313	382	2770	35.5
5	398	467	4479	44
6	498	567	7012	53.6

PERFORMANCE DATA

Type	Air Velocity (m/s)	1	2	3	4	5	6	7	8	9	10
1	Air Volume (CMH)	71	141	212	282	353	423	494	565	635	706
	Pressure Loss (Pa)	8.1	32	71	132	201	290	429	508	650	775
	Throw (m)	5	5.1	7.6	9.9	10.8	11.8	13.9	16.1	17.7	19.9
2	Air Volume (CMH)	111	222	333	443	554	665	776	887	998	1108
	Pressure Loss (Pa)	7.9	31	69.5	128	193	282	415	490	637	768
	Throw (m)	4	6.8	9.1	11.3	12.7	14.1	17	19.1	21.2	24
3	Air Volume (CMH)	174	348	522	696	869	1043	1217	1391	1565	1739
	Pressure Loss (Pa)	7.5	30	67.5	120	188	270	368	480	608	750
	Throw (m)	5.1	8.5	11.5	14.2	16	17.8	20.5	24	26.7	29.3
4	Air Volume (CMH)	277	554	831	1108	1385	1662	1939	2216	2493	2770
	Pressure Loss (Pa)	6.9	28	62	109	177	231	335	446	562	618
	Throw (m)	5	8.05	13.4	16.4	18.7	21.1	25.5	28.9	32.3	35.5
5	Air Volume (CMH)	448	896	1344	1791	2239	2687	3135	3583	4031	4479
	Pressure Loss (Pa)	6	24	54	96	150	216	294	384	486	600
	Throw (m)	6.6	11.3	16	20	23.2	26.4	30.8	35.2	39.6	44
6	Air Volume (CMH)	701	1402	2104	2805	3506	4207	4908	5610	6311	7012
	Pressure Loss (Pa)	5.8	22	46	89	143	210	261	346	424	550
	Throw (m)	8.6	14.7	18.5	23.9	28.3	32.5	36.4	42.1	47.9	53.6